

**DIPACO**

***COMMON RAIL  
ELECTRONIC UNIT INJECTOR / UNIT PUMP  
PARTS CATALOG***

**Updated April 2010**

---

## ADDRESS

---

### **DIPACO, Inc.**

105 East Parr Boulevard  
Reno, Nevada 89512 USA

Phone: (775) 329-7511

Fax: (775) 329-9740

Toll Free Phone: (800) 648-4720

Toll Free Fax: (888) 320-7761

E-Mail: [sales@dipaco.com](mailto:sales@dipaco.com)

Internet: [www.dipaco.com](http://www.dipaco.com) | [www.dtechproducts.com](http://www.dtechproducts.com)

---

## WHAT WE OFFER

---

- Providing quality fuel injection parts since 1948
- Comprehensive warranty
- Competitive pricing
- Excellence in customer service
- Company representation before and after sales
- Multi-skilled staff
- Extended trading hours
- Toll free phone and fax ordering
- Full technical support
- Quality commitment
- Superior quality inventory
- Same day shipping

---

## INFORMATION

---

Copyright

**DIPACO, Inc.** 2010. No part of this publication may be reproduced in any form by any means without written permission.

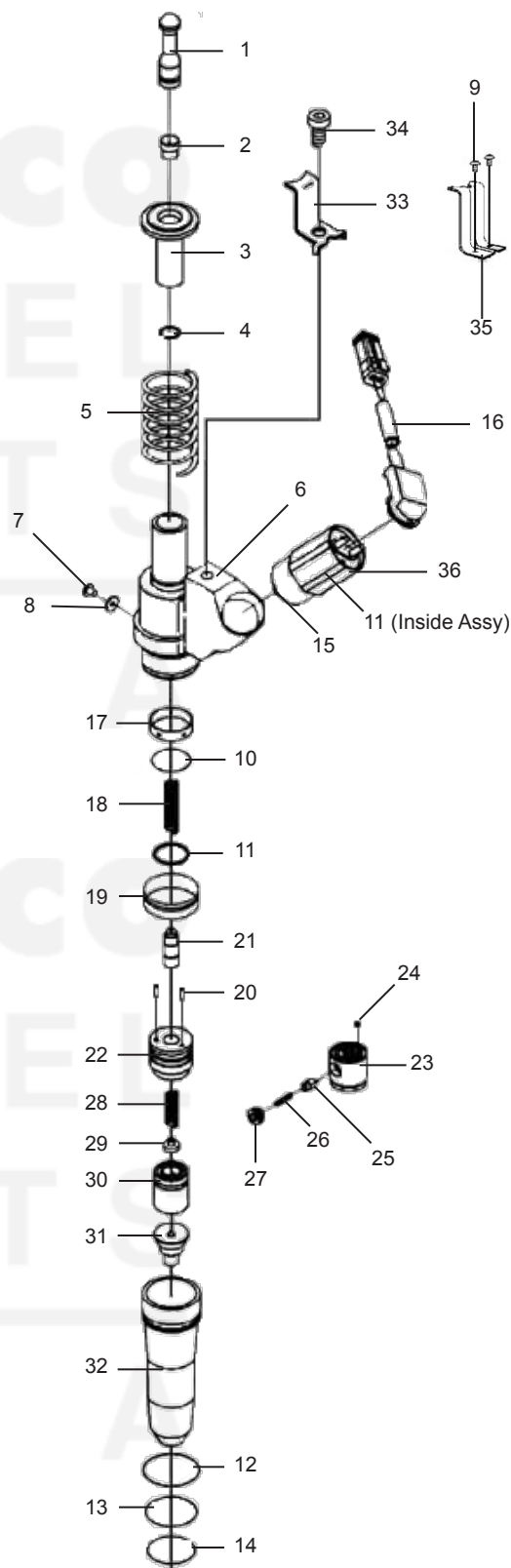
This catalog is in digital format to allow for continuous updating as we add additional parts. For current part availability, please consult our current price list or contact **DIPACO** or your **DIPACO** distributor.

This catalog is for reference purposes only. **DIPACO** assumes no responsibility or liability for any errors or inaccuracies that may appear in this publication. All mention of OEM names and part numbers are for reference only.

<b>SUBJECT</b>	<b>PAGE</b>
Cummins Celect.....	4-6
Detroit Diesel Series 50/60.....	1-10
Detroit Diesel Series 92.....	1-12
Caterpillar.....	1-14
Bosch PDE80.....	1-15
Bosch PDE30-PDE90.....	1-16
Bosch PDE100.....	1-18
Bosch PDE31.....	1-20
Delphi.....	1-22
Bosch PLD100-110 Type B.....	1-25
Bosch PLD100.....	1-26
Bosch PLD110.....	1-27
Caterpillar & EDM (3500).....	1-29
Pop Test Adapters.....	1-30
<b>Common Rail Fuel Systems.....</b>	<b>Section 2</b>
Electronic Simulator.....	2-1
Bosch CP-1 Fuel Pump.....	2-2
Bosch CP-2 Fuel Pump.....	2-5
Bosch CP-3 Fuel Pump.....	2-6
Delphi Fuel Pump.....	2-10
Siemens Fuel Pump.....	2-11
Bosch Common Rail Injector.....	2-12
Cummins ISB <sup>e</sup> Common Rail Injector.....	2-14
Delphi Common Rail Injector.....	2-16
Duramax/Isuzu Common Rail Injector.....	2-18
Denso.....	2-20
Fuel Line Kits.....	2-21
Diagnostic Tools.....	2-22
<b>Dual Spring Injectors.....</b>	<b>Section 3</b>
Test and Assembly Fixture.....	3-2
<b>Nozzles.....</b>	<b>Section 4</b>
Nozzles.....	4-1
<b>Test Bench Hardware and Accessories.....</b>	<b>Section 5</b>
Test Bench Hardware and Accessories.....	5-1

# CUMMINS CELECT Exploded Injector

REF	PART	DESCRIPTION	QTY
1	-	LINK	1
2	-	LINK SOCKET	1
3	3081342	FOLLOWER	1
3	3081343	FOLLOWER	1
4	3072486	RETAINER RING	1
5	3078236	FOLLOWER SPRING	1
5	D3411340	FOLLOWER SPRING	1
6	3075659	BODY & PLUNGER	1
6	3075690	BODY & PLUNGER	1
-	RTF26104	REPAIR KIT N14	1
-	RTF26105	REPAIR KIT L10/M11/ISM	1
7	RTF26119	FUEL PASSAGE SCREW	1
8	RTF26120	FUEL PASSAGE WASHER	1
9	D3080811	RETAIN SCREW (N14)	2
10	RTF26121	BODY O-RING (L10/M11/ISM)	1
11	RTF26118	COIL & BARREL O-RING (GREEN)	2
12	D3070136	UPPER NUT O-RING (RED)	1
13	D3070137	MIDDLE NUT O-RING (WHITE)	1
14	D3070138	LOWER NUT O-RING (BLUE)	1
15	D3034408	COIL RETAINER NUT O-RING	1
16	RTF26125	WIRING HARNESS	1
-	RTF26125-1	CONNECTOR AND SEAL	A/R
-	RTF26125-2	WEDGE LOCK	A/R
-	RTF26125-3	SEAL	A/R
-	RTF26125-4	KIT	A/R
-	RTF26125-5	COVER	A/R
17	-	SPILL DEFLECTOR	1
18	RTF26100	BIAS SPRING .254" ID	1
18	RTF26123	BIAS SPRING .188" ID	1
19	D3071967	FILTER	1
20	D203426	ALIGNMENT PIN	2
-	-	PLUNGER & BARREL ASSY	1
21	-	PLUNGER	1
22	-	BARREL	1
23	3072819	CHECK CAGE	1
24	D3076068	CHECK BALL	1
25	-	PRESSURE RELIEF VALVE	1
26	-	SPRING	1
27	-	NUT	1
28	RTF26101	PRESSURE SPRING	1
29	RTF26110-114	SPRING SEAT .114/.115" NO GROOVE	A/R
29	RTF26110-118	SPRING SEAT .118/.119" 1 GROOVE	A/R
29	RTF26110-123	SPRING SEAT .123/.124" 2 GROOVES	A/R
30	RTF26111	SPRING CAGE	1
31	SEE PAGE 1-6	NOZZLE	1
32	-	NUT (L10/M11)	1
33	-	RETAINER (L10/M11)	1
34	-	RETAIN SCREW (L10/M11/ISM)	1
35	-	RETAINER (N14)	1
36	-	STATOR	1





## CUMMINS CELECT Nozzles / Cummins CLP Reference

APPLICATIONS:			CUMMINS CLP REFERENCE (CONTINUED)			
L10 M11	M11 Plus N14 Plus	ISM	CPL REF	DIPACO NOZZLE	CPL REF	DIPACO NOZZLE
AVAILABLE NOZZLES			1642	RTF26117	2143	RTF26116
DIPACO NOZZLE	ENGINE MODEL	NOZZLE MARKING	1649	RTF26107	2178	RTF26122
RTF26107	L10 & N14	3076071	1664	RTF26136	2199	RTF26136
RTF26108	M11	3084592	1665	RTF26136	2200	RTF26136
RTF26109	N14	3609861	1669	RTF26117	2201	RTF26114
RTF26113	M11 Plus	26113	1801	RTF26136	2204	RTF26138
RTF26114	M11 Plus	26114	1802	RTF26136	2261	RTF26116
RTF26115	N14 Plus	3087791	1805	RTF26136	2306	RTF26128
RTF26116	N14 Plus	3088175	1806	RTF26109	2350	RTF26136
RTF26117	L10	3079963	1807	RTF26109	2370	RTF26122
RTF26122	M11 Plus	3095043	1809	RTF26128	2371	RTF26122
RTF26126	N14 Plus	3411388	1827	RTF26136	2376	RTF26136
RTF26127	N14 Plus	3411690	1828	RTF26136	2389	RTF26127
RTF26128	N14 Plus	3609855	1829	RTF26136	2390	RTF26137
RTF26135	N14	3609852	1830	RTF26108	2398	RTF26139
RTF26136	M11	3609925	1831	RTF26107	2391	RTF26126
RTF26137	N14	3411694	1841	RTF26108	2403	RTF26116
RTF26138	M11	3095729	1844	RTF26128	2425	RTF26114
RTF26139	N14	3409978	1852	RTF26128	2445	RTF26138
CUMMINS CLP REFERENCE			1855	RTF26108	2477	RTF26136
CPL REF	DIPACO NOZZLE	CPL REF	1856	RTF26108	2492	RTF26128
1324	RTF26107	1513	1857	RTF26108	2539	RTF26138
1347	RTF26107	1514	1875	RTF26108	2540	RTF26138
1348	RTF26107	1533	1885	RTF26108	2541	RTF26138
1357	RTF26107	1534	1896	RTF26128	2542	RTF26138
1367	RTF26107	1535	1924	RTF26116	2543	RTF26138
1375	RTF26107	1536	1944	RTF26107	2562	RTF26136
1384	RTF26107	1537	1973	RTF26108	2563	RTF26136
1385	RTF26107	1538	1983	RTF26117	2576	RTF26136
1386	RTF26107	1540	1984	RTF26117	2590	RTF26127
1389	RTF26107	1548	1987	RTF26128	2591	RTF26126
1390	RTF26107	1572	2003	RTF26115	2592	RTF26126
1391	RTF26107	1573	2005	RTF26115	2607	RTF26136
1392	RTF26107	1574	2012	RTF26138	2608	RTF26136
1393	RTF26107	1575	2026	RTF26128	2610	RTF26136
1394	RTF26107	1580	2027	RTF26135	2611	RTF26136
1420	RTF26107	1583	2036	RTF26122	2612	RTF26136
1426	RTF26107	1587	2037	RTF26122	2614	RTF26136
1428	RTF26107	1588	2040	RTF26138	2615	RTF26136
1445	RTF26107	1589	2041	RTF26138	2619	RTF26138
1511	RTF26107	1590	2042	RTF26138	2811	RTF26138
1512	RTF26107	1617	2066	RTF26117	2812	RTF26138
			2067	RTF26117	2828	RTF26136
			2097	RTF26108	2659	RTF26116
			2099	RTF26138	9921	RTF26116
			2140	RTF26113	9925	RTF26116
			2141	RTF26113	9951	RTF26116

## CUMMINS CELECT

### Nozzle To Injector / Injector To Nozzle Cross Reference

#### DIPACO NOZZLE TO CUMMINS INJECTOR LISTING

DIPACO NOZZLE	CUMMINS INJECTOR	ENGINE
RTF26107	3070629	L10
RTF26107	3070739	N14
RTF26107	3071534	L10
RTF26107	3073995	N14
RTF26107	3081314	N14
RTF26107	3081315	N14
RTF26107	3081317	L10
RTF26107	3652516	L10
RTF26107	3652541	N14
RTF26107	3652542	N14
RTF26108	3084589	M11
RTF26108	3087557	M11
RTF26108	3411752	M11
RTF26109	3083846	N14
RTF26109	3087733	N14
RTF26109	3087560	N14
RTF26109	3411759	N14
RTF26113	3411755	M11
RTF26114	3411758	M11
RTF26115	3087788	N14
RTF26115	3095086	N14
RTF26115	3411763	N14
RTF26115	3609796	N14
RTF26116	3088178	N14
RTF26116	3411764	N14
RTF26117	3073996	L10
RTF26117	3081318	L10
RTF26117	3652540	L10
RTF26122	3095040	M11
RTF26122	3411753	M11
RTF26126	3411385	N14
RTF26126	3411767	N14
RTF26127	3411381	N14
RTF26127	3411691	N14
RTF26127	3411765	N14
RTF26128	3083848	N14
RTF26128	3087558	N14
RTF26128	3087734	N14
RTF26128	3411760	N14

(Continued on Next Page)

#### CUMMINS INJECTOR TO DIPACO NOZZLE LISTING

CUMMINS INJECTOR	DIPACO NOZZLE	ENGINE
3070629	RTF26107	L10
3070739	RTF26107	N14
3071534	RTF26107	L10
3073995	RTF26107	N14
3073996	RTF26117	L10
<b>3080930</b>	<b>RTF26136</b>	<b>M11</b>
3081314	RTF26107	N14
3081315	RTF26107	N14
3081317	RTF26107	L10
3081318	RTF26117	L10
3083846	RTF26109	N14
3083848	RTF26128	N14
<b>3083849</b>	<b>RTF26136</b>	<b>M11</b>
3084589	RTF26108	M11
3087557	RTF26108	M11
3087558	RTF26128	N14
3087560	RTF26109	N14
3087733	RTF26109	N14
3087734	RTF26128	N14
<b>3087772</b>	<b>RTF26138</b>	<b>N14</b>
3087788	RTF26115	N14
3088178	RTF26116	N14
3095040	RTF26122	M11
3095086	RTF26115	N14
<b>3409975</b>	<b>RTF26139</b>	<b>N14</b>
3411381	RTF26127	N14
3411385	RTF26126	N14
3411691	RTF26127	N14
3411752	RTF26108	M11
3411753	RTF26122	M11
<b>3411754</b>	<b>RTF26138</b>	<b>M11</b>
3411755	RTF26113	M11
<b>3411756</b>	<b>RTF26136</b>	<b>M11</b>
3411758	RTF26114	M11
3411759	RTF26109	N14
3411760	RTF26128	N14
<b>3411761</b>	<b>RTF26135</b>	<b>N14</b>
3411763	RTF26115	N14
3411764	RTF26116	N14

(Continued on Next Page)

## CUMMINS CELECT Nozzle To Injector / Injector To Nozzle Cross Reference

### DIPACO NOZZLE TO CUMMINS INJECTOR LISTING

*(Continued from Previous Page)*

DIPACO NOZZLE	CUMMINS INJECTOR	ENGINE
RTF26135	3411761	N14
RTF26136	3411756	M11
RTF26136	3609922	M11
RTF26136	3080930	M11
RTF26136	3083849	M11
RTF26137	3411766	N14
RTF26138	3411754	M11
RTF26138	3087772	M11
RTF26139	3411762	N14
RTF26139	3409975	N14

### CUMMINS INJECTOR TO DIPACO NOZZLE LISTING

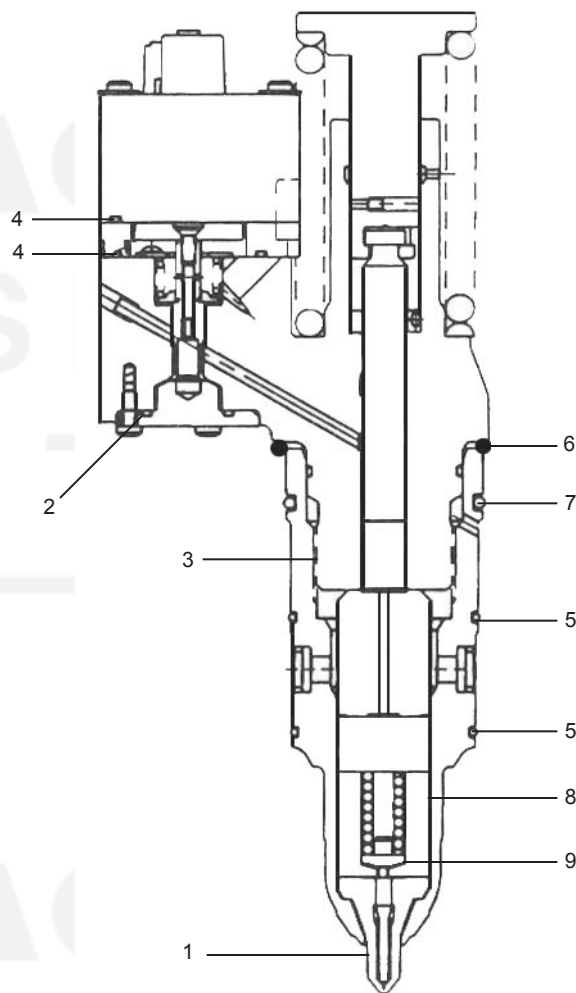
*(Continued from Previous Page)*

CUMMINS INJECTOR	DIPACO NOZZLE	ENGINE
3411765	RTF26127	N14
3411766	RTF26137	N14
<b>3411767</b>	<b>RTF26126</b>	<b>N14</b>
3609796	RTF26115	N14
<b>3609922</b>	<b>RTF26136</b>	<b>M11</b>
3652516	RTF26107	L10
3652540	RTF26117	L10
3652541	RTF26107	N14
3652542	RTF26107	N14

# CUMMINS CELECT Kits And Parts

REF	PART	DESCRIPTION	QTY	REF	PART	DESCRIPTION	QTY
<b>KITS</b>				<b>KITS</b>			
	<b>RTF26104</b>	<b>REPAIR KIT - N14</b>			<b>RTF26140</b>	<b>OVERHAUL REPAIR KIT FOR L10 / M11 / N14 / ISM</b>	
-	RTF26120	FUEL PASSAGE WASHER	1	-	RTF26125	WIRING HARNESS	1
-	RTF26119	FUEL PASSAGE SCREW	1	-	RTF26123	CELECT BIAS SPRING 0.188" ID	1
-	RTF26118	INTERNAL O-RING	2	-	RTF26121	BODY O-RING (L10/M11/ISM)	1
-	D3080811	RETAINING SCREW	2	-	RTF26120	FUEL PASSAGE WASHER	1
-	D3070138	O-RING (BLUE)	1	-	RTF26119	FUEL PASSAGE SCREW	1
-	D3070137	O-RING (WHITE)	1	-	RTF26118	INTERNAL O-RING	2
-	D3070136	O-RING (RED)	1	-	RTF26101	NOZZLE PRESSURE SPRING	1
-	D3034408	COIL RETAINER NUT O-RING	1	-	RTF26100	CELECT BIAS SPRING 0.254" ID	1
	<b>RTF26104/25</b>	<b>REPAIR KIT FOR 25 INJECTORS</b>		-	RTF26110-114	SPRING SEAT .114/.115"	1
	<b>RTF26105</b>	<b>REPAIR KIT - L10 / M11</b>		-	RTF26110-118	SPRING SEAT .118/.119"	1
-	RTF26121	BODY O-RING	1	-	RTF26110-123	SPRING SEAT .123/.124"	1
-	RTF26120	FUEL PASSAGE WASHER	1	-	D3080811	RETAINING SCREW (N14)	2
-	RTF26119	FUEL PASSAGE SCREW	1	-	D3070138	O-RING (BLUE)	1
-	RTF26118	INTERNAL O-RING	2	-	D3070137	O-RING (WHITE)	1
-	D3070138	O-RING (BLUE)	1	-	D3070136	O-RING (RED)	1
-	D3070137	O-RING (WHITE)	1	-	D3071967	CELECT INJECTOR FILTER	1
-	D3070136	O-RING (RED)	1	-	D3076068	CHECK BALL (CERAMIC)	1
-	D3034408	COIL RETAINER NUT O-RING	1	-	D3034408	COIL RETAINER NUT O-RING	1
	<b>RTF26105/25</b>	<b>REPAIR KIT FOR 25 INJECTORS</b>		<b>PARTS</b>			
	<b>RTF26124</b>	<b>EXTERNAL SEAL KIT</b>		-	RTF26125	WIRING HARNESS	1
-	D3071967	CELECT INJECTOR FILTER	1	-	RTF26125-1	CONNECTOR AND SEAL	5
-	D3070138	O-RING (BLUE)	1	-	RTF26125-2	WEDGE LOCK	5
-	D3070137	O-RING (WHITE)	1	-	RTF26125-3	SEAL	5
-	D3070136	O-RING (RED)	1	-	RTF26125-5	COVER	5
	<b>RTF26129</b>	<b>INJECTOR REPAIR KIT</b>					
-	RTF26123	CELECT BIAS SPRING 0.188" ID	1				
-	RTF26121	BODY O-RING	1				
-	RTF26120	FUEL PASSAGE WASHER	1				
-	RTF26119	FUEL PASSAGE SCREW	1				
-	RTF26118	INTERNAL O-RING	2				
-	RTF26101	PRESSURE SPRING CELECT	1				
-	RTF26100	CELECT BIAS SPRING 0.254" ID	1				
-	D3080811	SCREW-COUPLING RETAINER	2				
-	D3076068	CHECK BALL (CERAMIC)	1				
-	D3071967	CELECT INJECTOR FILTER	1				
-	D3070138	O-RING (BLUE)	1				
-	D3070137	O-RING (WHITE)	1				
-	D3070136	O-RING (RED)	1				
-	D3034408	COIL RETAINER NUT O-RING	1				
	<b>RTF26129/25</b>	<b>REPAIR KIT FOR 25 INJECTORS</b>					
	<b>RTF26125-4</b>						
-	RTF26125-1	CONNECTOR AND SEAL	5				
-	RTF26125-2	WEDGE LOCK	5				

REF	PART	DESCRIPTION	QTY
1	SEE PAGE 1-10	NOZZLE	1
-	RTF26209	INTERNAL SEAL KIT	1
2	RTF26202	O-RING (BROWN)	1
3	RTF26203	O-RING (RED)	1
4	RTF26204	O-RING	2
-	RTF26210	EXTERNAL SEAL KIT	1
5	D5234699	O-RING	2
6	D5234701	O-RING	1
7	D5234702	O-RING	1
8	RTF26208	SPRING CAGE	1
9	RTF26207-122	.122/.123" NO OD GROOVE	A/R
9	RTF26207-124	.124/.125" 1 OD GROOVE	A/R
9	RTF26207-126	.126/.127" 2 OD GROOVES	A/R
9	RTF26207-128	.128/.129" 3 OD GROOVES	A/R
-	RTF26232	NOZZLE PRESSURE SPRING	10
-	RTF26231	COMPLETE SEAL KIT	A/R
-	RTF26209	INTERNAL SEAL KIT	A/R
-	RTF26210	EXTERNAL SEAL KIT	A/R
NOTE: SEE PAGE 11 FOR FULL KIT INFORMATION.			



## DETROIT DIESEL Nozzles For Series 50 And 60

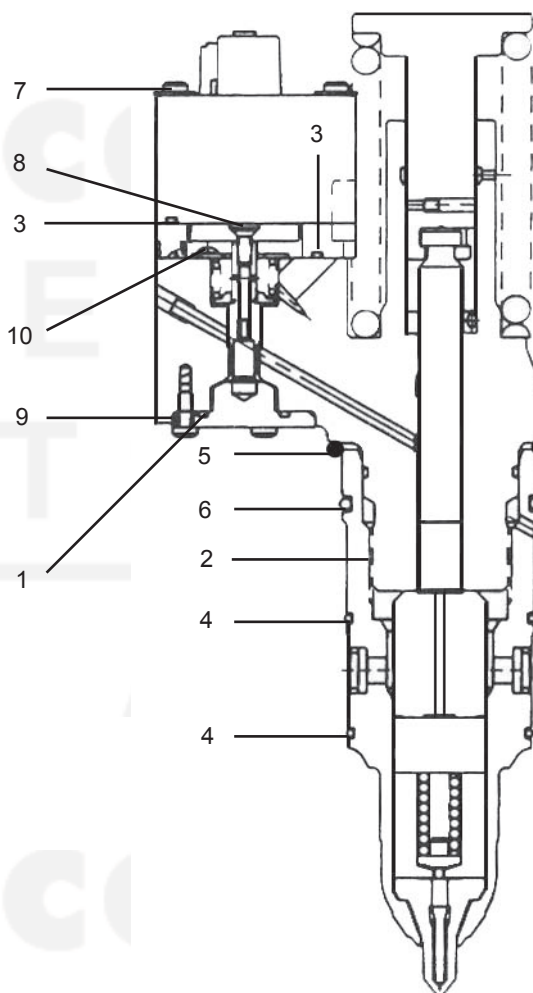
DIPACO has made a product improvement and added new injector applications to our range of nozzles for Series 50 and Series 60 injectors. The nozzle shape in the orifice area has been updated and the flow rates improved.

The nozzles are identified by a nozzle ID mark on the body. The ID mark relates to a flow rate family of nozzles. Specific flow rates within the family are specified by individual part numbers. Since the nozzle cannot be identified by the ID mark, only the application charts should be used to determine the proper nozzle for each injector to be serviced. Below you will find injector to new nozzle cross-reference with mark identification, as well as an old nozzle number reference.

DETROIT INJECTOR	DIPACO NOZZLE	NEW NOZZLE SHAPE ID MARK	OLD DIPACO NOZZLE
5234785	RTF26261	N73	RTF26217
5234795	RTF26262	N73	RTF26216
5234865	RTF26263	614	RTF26218
5234870	RTF26260	N73	RTF26215
5234935	RTF26259	N73	RTF26214
5234940	RTF26258	N71	RTF26219
5234945	RTF26264	612	RTF26216
5234970	RTF26258	N71	RTF26213
5235550	RTF26265	596	RTF26220
5235575	RTF26252	N67	RTF26211
5235580	RTF26253	N69	RTF26212
5235600	RTF26258	N71	
5235605	RTF26259	N73	
5235695	RTF26258	N71	RTF26213
5235915	RTF26255	N67	
5236952	SEE NOTE 1		
5236977	RTF26252	N67	RTF26220
5236978	RTF26253	N69	RTF26212
5236995	RTF26258	N71	
5237045	RTF26266	N44	
5237099	RTF26251	N44	
5237320	RTF26267	N71	RTF26213
5237466	RTF26256	N44	
5237650	RTF26257	50	

**NOTE 1:** 5236952 is replaced by 5237466 for engines before 1999 and 5237650 for engines 1999 and up.

	PART	DESCRIPTION	QTY
<b>KITS</b>			
	<b>RTF26209</b>	<b>INTERNAL SEAL KIT</b>	
1	RTF26202	O-RING (BROWN)	1
2	RTF26203	O-RING (RED)	1
3	RTF26204	O-RING	2
	<b>RTF26209/25</b>	<b>REPAIR KIT FOR 25 INJECTORS</b>	
	<b>RTF26210</b>	<b>EXTERNAL SEAL KIT</b>	
4	D5234699	O-RING	2
5	D5234701	O-RING	1
6	D5234702	O-RING	1
	<b>RTF26210/25</b>	<b>REPAIR KIT FOR 25 INJECTORS</b>	
	<b>RTF26237</b>	<b>SOLENOID SCREW KIT</b>	
7	RTF26233	SOLENOID SCREW/WASHER	1
8	RTF26234	ARMATURE SCREW	4
9	RTF26235	STOP SCREW	1
10	RTF26236	PLATE SCREW	3
			2
<b>PARTS</b>			
-	RTF26239	CAM FOLLOWER	1





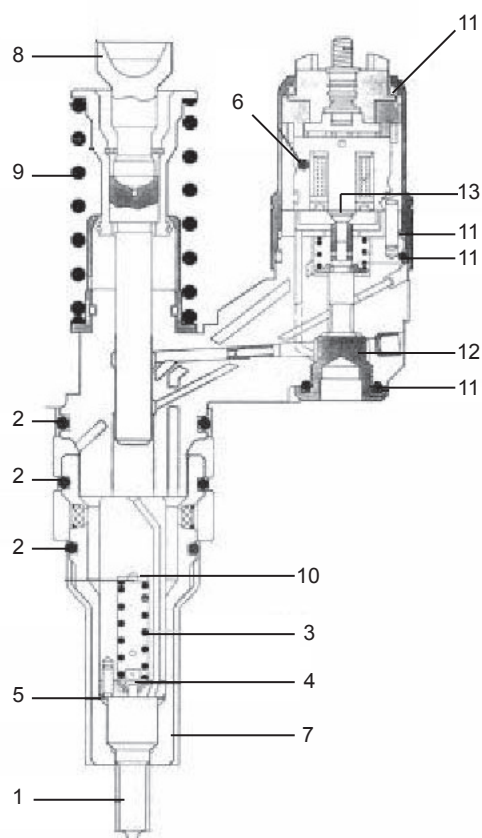
## CATERPILLAR

## Kits And Repair Parts For 3500 Unit Injectors

REF	PART	DESCRIPTION	QTY	APPLICATIONS:
	<b>KITS</b>			<b>3176</b> <b>3196</b> <b>3406E</b> <b>C-10</b> <b>C-12</b>
-	<b>RTF26300</b>	<b>EXTERNAL O-RING KIT 3406E</b>		
-	D9X7419	O-RING (BLUE)	1	
-	D9X7418	O-RING (BLUE)	1	
-	D9X7317	O-RING (GREEN)	1	
	<b>RTF26301</b>	<b>EXTERNAL O-RING KIT</b> <b>3176 / 3196 / C-10 / C-12</b>		
-	D9X7722	O-RING (PINK)	1	
-	D9X7317	O-RING (GREEN)	1	
-	D215-3198	O-RING (PURPLE)	1	
-	D1198784	O-RING (GREEN)	1	
	<b>RTF26034</b>	<b>SOLENOID REPAIR KIT (ALL</b> <b>CATERPILLAR EXCEPT EARLY 3176)</b>		
-	RTF26034-1	SOLENOID SCREW	4	
-	RTF26034-2	SOLENOID SCREW	1	
-	RTF26034-3	SOLENOID SCREW	2	
-	RTF26034-4	SOLENOID O-RING	1	
	<b>REPAIR PARTS FOR 3500 UNIT INJECTORS</b>			
-	D7E3399	PLUNGER AND BARREL	1	
-	D7C2238	NOZZLE	1	
-	D6V9178	NOZZLE O-RING	25	
-	RTF35001	EXTERNAL O-RING KIT (MUI)	1	
-	RTF35002	EXTERNAL ORING KIT (EUI)	1	

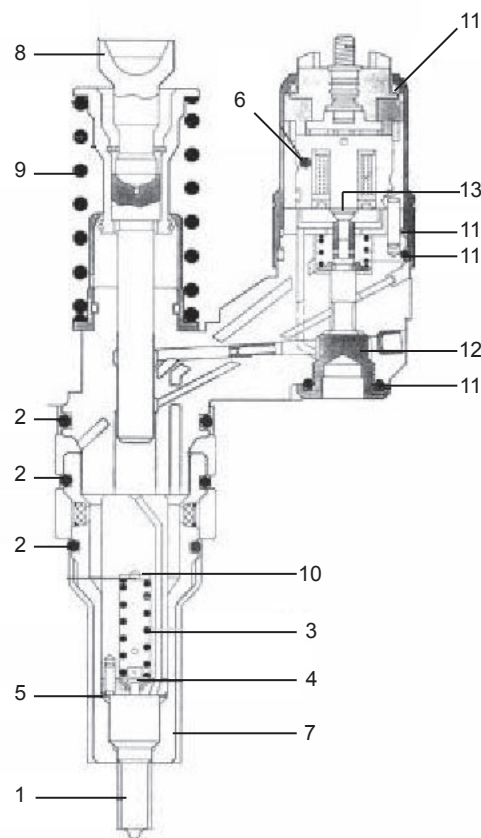


REF	PART	DESCRIPTION	QTY
1	-	NOZZLE	1
2	RTF26061	EXTERNAL SEAL KIT	1
3	RTF26010	SPRING	1
-	RTF26046	SPRING SEAT/INT. PLATE KIT	1
4	RTF26011	SPRING SEAT	1
5	RTF26012	INTERMEDIATE PLATE	1
6	-	TAPPET O-RING	1
7	-	SOLENOID	1
8	-	NOZZLE NUT	1
9	-	TAPPET	1
10	RTF26030	NOZZLE SHIM KIT	A/R
11	RTF26029	SOLENOID O-RING KIT-EARLY	1
-	-	LARGE WHITE O-RING	1
-	-	LARGE BLACK O-RING	1
-	-	GREEN O-RING	1
-	-	WHITE O-RING	1
-	-	RED O-RING	1
11	RTF26044	SOLENOID O-RING KIT-LATE	1
-	-	LARGE WHITE O-RING	1
-	-	LARGE BLACK O-RING	1
-	-	GREEN O-RING	1
-	-	WHITE O-RING	1
-	-	RED O-RING	1
12	RTF26040	SOLENOID REGULATOR KIT	A/R
12	RTF26040-SIZE	14.60mm to 14.80mm HEIGHT	1
-	RTF26041	SOLENOID REG O-RING-EARLY	1
-	RTF26060	SOLENOID REG O-RING-LATE	1
13	RTF26024	ARMATURE SCREW	1



### Typical Injector View

REF	PART	DESCRIPTION	QTY
1	SEE PAGE 1-18	NOZZLE	1
2	RTF26001	EXTERNAL SEAL KIT	1
3	RTF26010	SPRING	1
-	RTF26046	SPRING SEAT/INT. PLATE KIT	1
4	RTF26011	SPRING SEAT	1
5	RTF26012	INTERMEDIATE PLATE	1
6	-	TAPPET O-RING	1
7	-	SOLENOID	1
8	-	NOZZLE NUT	1
9	-	TAPPET	1
10	RTF26030	NOZZLE SHIM KIT	A/R
11	RTF26029	SOLENOID O-RING KIT-EARLY	1
-	-	LARGE WHITE O-RING	1
-	-	LARGE BLACK O-RING	1
-	-	GREEN O-RING	1
-	-	WHITE O-RING	1
-	-	RED O-RING	1
11	RTF26044	SOLENOID O-RING KIT-LATE	1
-	-	LARGE WHITE O-RING	1
-	-	LARGE BLACK O-RING	1
-	-	GREEN O-RING	1
-	-	WHITE O-RING	1
-	-	RED O-RING	1
12	RTF26040	SOLENOID REGULATOR KIT	A/R
12	RTF26040-SIZE	14.60mm to 14.80mm HEIGHT	1
-	RTF26041	SOLENOID REG O-RING-EARLY	1
-	RTF26060	SOLENOID REG O-RING-LATE	1
13	RTF26024	ARMATURE SCREW	1





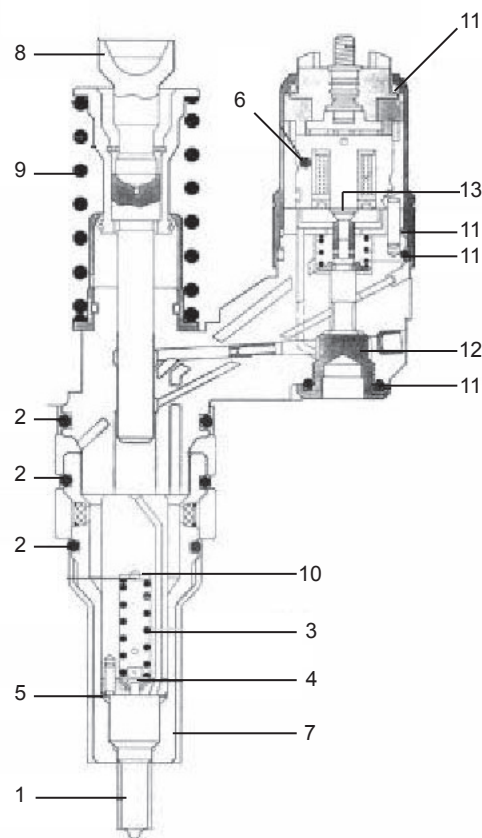
**RTF26029**  
Solenoid Seal Kit Early



**RTF26066**  
Internal/External  
Seal Kit

### Typical Injector View

REF	PART	DESCRIPTION	QTY
1	SEE PAGE 1-20	NOZZLE	1
2	RTF26066	INTERNAL/EXTERNAL SEAL KIT	1
3	RTF26010	SPRING	1
-	RTF26046	SPRING SEAT/INT. PLATE KIT	1
4	RTF26011	SPRING SEAT	1
5	RTF26012	INTERMEDIATE PLATE	1
6	-	TAPPET O-RING	1
7	-	SOLENOID	1
8	-	NOZZLE NUT	1
9	-	TAPPET	1
10	RTF26030	NOZZLE SHIM KIT	A/R
11	RTF26029	SOLENOID O-RING KIT-EARLY	1
-	-	LARGE WHITE O-RING	1
-	-	LARGE BLACK O-RING	1
-	-	GREEN O-RING	1
-	-	WHITE O-RING	1
-	-	RED O-RING	1
11	RTF26044	SOLENOID O-RING KIT-LATE	1
-	-	LARGE WHITE O-RING	1
-	-	LARGE BLACK O-RING	1
-	-	GREEN O-RING	1
-	-	WHITE O-RING	1
-	-	RED O-RING	1
12	RTF26040	SOLENOID REGULATOR KIT	A/R
12	RTF26040-SIZE	14.60mm to 14.80mm HEIGHT	1
-	RTF26041	SOLENOID REG O-RING-EARLY	1
-	RTF26060	SOLENOID REG O-RING-LATE	1
13	RTF26024	ARMATURE SCREW	1



**Applications:**  
Volvo 420-460  
John Deere



**A3 Injector**



**Cam Box Kit**  
Cam box components for Volvo applications are included with the **RTF25040** cam box. Individual cam box kit parts are available.  
Volvo 420-460



**Cam Box Kit**  
**RTF26047** cam box. Individual cam box kit parts are available.  
John Deere



**RTF26005**  
**Pop Test Adapter**  
Use with A3 injectors.



**RTF26032**  
**Intermediate Plate and Spring Seat**

**Nozzle Shim Kit**  
Available sizes in mm:  
0.20, 0.30, 0.40, 0.50, 0.60

**RTF26033**  
**Nozzle Shim Kit**  
Shim kit contains 20 pieces each of the sizes listed.  
Use with A3 injectors.



**E1 Injector**

## AVAILABLE NOZZLES

**NOZZLE**  
RTFDLLA155P7154  
Delphi LP004B

**ENGINE**  
Volvo FH12



**RTF26001**  
**External O-Ring Kit**  
Volvo, John Deere Use with A3 injectors.



**RTF26034**  
**Solenoid Repair Kit**  
Volvo, John Deere Use with A3 injectors.



**RTF26039**  
**External O-Ring Kit**  
Volvo FH12 460 CV Use with E1 injectors.

### Typical Injector View

REF	PART	DESCRIPTION	QTY
1	SEE PAGE 1-24	NOZZLE	1
2	RTF26001	EXTERNAL SEAL KIT	1
3	RTF26002	SPRING	1
4	RTF26032	INTER. PLATE AND SPRING SEAT	1
6	-	SOLENOID	1
7	-	NOZZLE NUT	1
8	-	TAPPET	1
9	-	SPRING	1
10	RTF26033	NOZZLE SHIM KIT	A/R
11	RTF26034	SOLENOID REPAIR KIT	1

# DIPACO ELECTRONIC UNIT INJECTORS AND PUMPS

## Bosch PLD100-110 Type 'B'



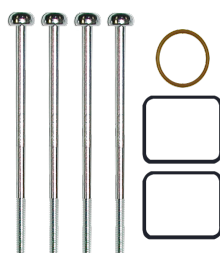
### Applications:

Mack  
Renault

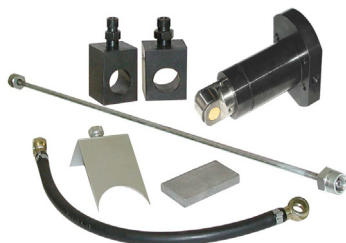
DAF  
KHD



**RTF26021**  
**Solenoid Screw Bit**  
T20 Anti-tamper Torx Bit



**RTF26022**  
**Solenoid Repair Kit**



**RTF26023**  
**Cam Box Kit**  
Mack PLD Pumps  
*Individual cam box kit parts are available.*



**RTF26023-1**  
**Adapter Flange**  
Mack PLD Pumps  
*If you own Cam Box Kit RTF26015 or RTF26016 then you only need to purchase this adapter flange to test this injector.*



**RTF26023-2**  
**Injector Adapter Block**



**RTF26023-3**  
**Injector Adapter Block**



**RTF26024**  
**Solenoid Armature Screw**



**RTF26035**  
**External O-Ring Kit**



**RTF26062**  
**Stop Kit**



# ELECTRONIC UNIT INJECTORS AND PUMPS

## Bosch PLD100

Applications:  
Freightliner  
Mercedes Atego  
Mercedes MBE900



**RTF25084**  
External O-Ring Kit



**RTF26062**  
Stop Kit



**RTF26016**  
Cam Box Kit  
*Individual cam box kit parts are available.*



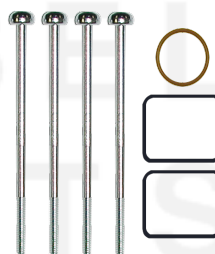
**RTF26016-1**  
Adapter Flange  
*If you own Cam Box Kit RTF26015 or RTF26023 then you only need to purchase this adapter flange to test this injector.*



**RTF26016-2**  
Injector Adapter Block



**RTF26021**  
Solenoid Screw Bit



**RTF26022**  
Solenoid Repair Kit



**RTF26024**  
Solenoid Armature Screw





**Applications:**  
Freightliner  
Mercedes Actros  
Mercedes MBE4000



**RTF25081**  
**Quick Connector 21.5mm**  
Use with Rilsan tubes  
supplied in RTF25041.

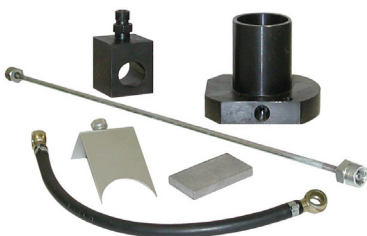


**RTF25085**  
**External O-Ring Kit**

### Nozzle Shim Kit

Available sizes in mm:  
0.80, 0.85, 0.90, 1.00, 1.05,  
1.10, 1.15, 1.20, 1.25, 1.30,  
1.30, 1.35, 1.40, 1.45, 1.50,  
1.55, 1.60, 1.65, 1.70, 1.75,  
1.80, 1.85, 1.90, 1.95, 2.00

**RTF25108**  
**Nozzle Shim Kit**  
Shim kit contains 20  
pieces each of the size  
shown on the right.



**RTF26015**  
**Cam Box Kit**  
*Individual cam box kit  
parts are available.*



**RTF26015-1**  
**Adapter Flange**  
*If you own Cam Box Kit  
RTF26016 or RTF26023  
then you only need to  
purchase this adapter  
flange to test this injector.*



**RTF26016-2**  
**Injector Adapter Block**



**RTF26021**  
**Solenoid Screw Bit**

### AVAILABLE NOZZLES

NOZZLE	ENGINE
RTFDLLA154P596++	Mercedes Actros



**RTF26022**  
**Solenoid Repair Kit**

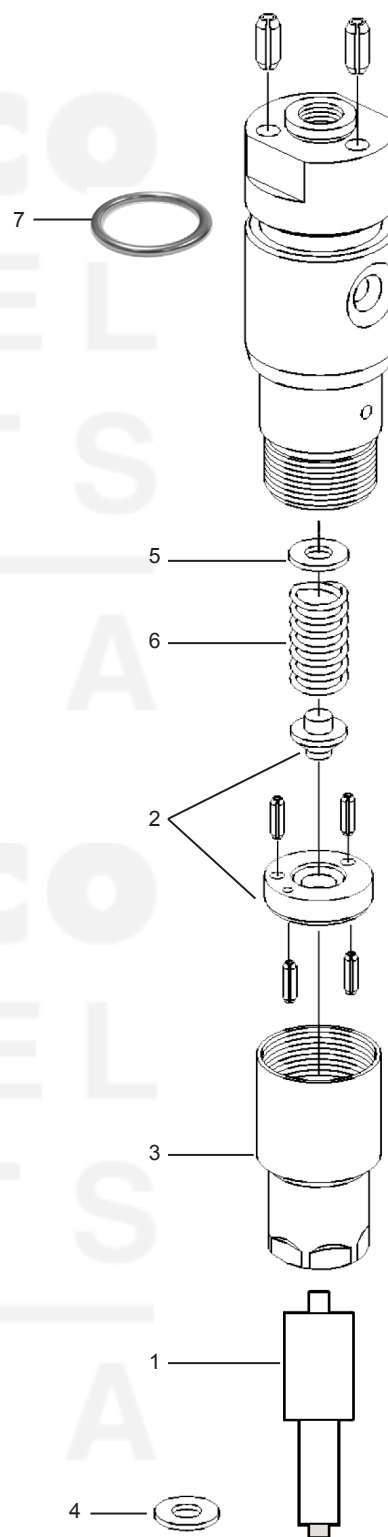


**RTF26024**  
**Solenoid Armature Screw**



**RTF26062**  
**Stop Kit**

REF	PART	DESCRIPTION	QTY
1	SEE PAGE 1-28	NOZZLE	1
2	RTF26032	INTER. PLATE AND SPRING SEAT	1
3	RTF26037	NOZZLE NUT	1
4	RTF25087	NOZZLE WASHER	1
5	RTF25108	NOZZLE SHIM	A/R
6	RTF26038	SPRING	1
7	RTF26063	O-RING	1



# DIPACO ELECTRONIC UNIT INJECTORS AND PUMPS

## Caterpillar And EDM



**Applications:**  
**EMD Electronic**  
**Caterpillar 3500**  
**Mechanical**  
**Caterpillar 3500**  
**Electronic**

### RTF27000

#### Large Injector Cam Box

The RTF27000 Cam Box is designed for testing large unit injectors used in marine, railroad, and large industrial applications. The RTF27000 is used together with the RTF25005 Electronic Simulator. The RTF27000 can presently test EMD EUI injectors and Caterpillar 3500 series injectors, both mechanical and electronic.

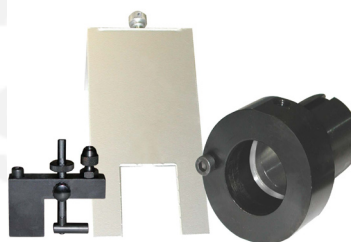
The kit includes the cam box shown below and the accessories to the right.



This cam box requires a minimum 15HP test bench.



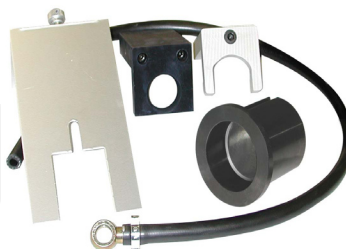
**Injector Adapter**  
**Caterpillar 3500**  
**Mechanical**



**Injector Adapter**  
**Caterpillar 3500**  
**Electronic**



**Injector Adapter**  
**EMD**



**Large Injector Cam Box**  
**Accessories**



# ELECTRONIC UNIT INJECTORS AND PUMPS

## Pop Test Adapters



**RTF26003**  
**Pop Test Adapter**  
Bosch PDE31-PDE100  
Euro 1, Iveco, Volvo,  
Scania



**RTF26004**  
**Pop Test Adapter**  
Bosch PDE30-PDE90  
Iveco



**RTF26005**  
**Pop Test Adapter**  
Delphi A3, Volvo and  
John Deere



**RTF26006**  
**Pop Test Adapter**  
Bosch PDE31-PDE100  
Euro 2, Iveco, Volvo,  
Scania



**RTF26007**  
**Pop Test Adapter**  
Caterpillar  
3176/3196/C-10/C-12



**RTF26008**  
**Pop Test Adapter**  
Bosch PDE80  
Volkswagen



**RTF26009**  
**Pop Test Adapter**  
Delphi and Landrover



**RTF26201**  
**Pop Test Adapter**  
Detroit Series 50 and 60



**RTF26203**  
**Pop Test Adapter**  
Cummins Celect  
L10, M11 and ISM



**RTF26206**  
**Pop Test Adapter**  
Cummins Celect  
N14

**DIPACO**  
**DIESEL**  
**PARTS**  

---

**U S A**

**DIPACO**  
**DIESEL**  
**PARTS**  

---

**U S A**



DIPACO DIESEL PARTS - USA, working with Corona Diesel of Italy, is able to provide a full range of test equipment, repair equipment, and parts for Common Rail fuel systems. This catalog is meant for reference and is not all inclusive of our parts and equipment offerings.

### Minimum Test Bench Requirements

Drive Motor:

CP-1 4KW/5HP

CP-2/ECD-U2 15KW/20HP

CP-3 (7MM cam lift) 4KW/5HP. CP-3 (cam lift above 7MM) 7.5KW/10HP

Temperatures can be a concern. During the short time needed to perform pump tests, discharge temperatures can reach 60° C (140° F). Do not use test benches with Bosch KMM and KMA (except Bosch 815/KMA with VP44 conversion) fuel measurement units due to temperature issues. Do not use test benches with a Hartridge VDM fuel measurement unit because it requires a cylinder firing order. CP-1 pumps are mounted on a test bench with a VE mounting plate and a 20MM drive coupling. For Mercedes CP-1 pumps a DPA supported drive adapter (metric spline) and **DIPACO** kit RTF25000. We recommend a Kevlar reinforced Plexiglas shield be made to surround the common rail system for technician safety.

### Common Rail Fuel System Tests Performed

- Pressure-Control Valve
- Pump Leakage
- Inlet Safety Valve
- Pump Delivery Volume
- Pump Element Leakage
- Pump Element Shutoff Valve
- Injector Bleed Orifice Valve Ball Seal
- Injector Leakage
- Injector Full Load Delivery
- Injector Partial Load Delivery Variation
- Injector Opening Pressure, Atomization, Spray Pattern, and Seat Leakage
- Engine Rail Pressure Sensor



### RTF25005 Electronic Simulator

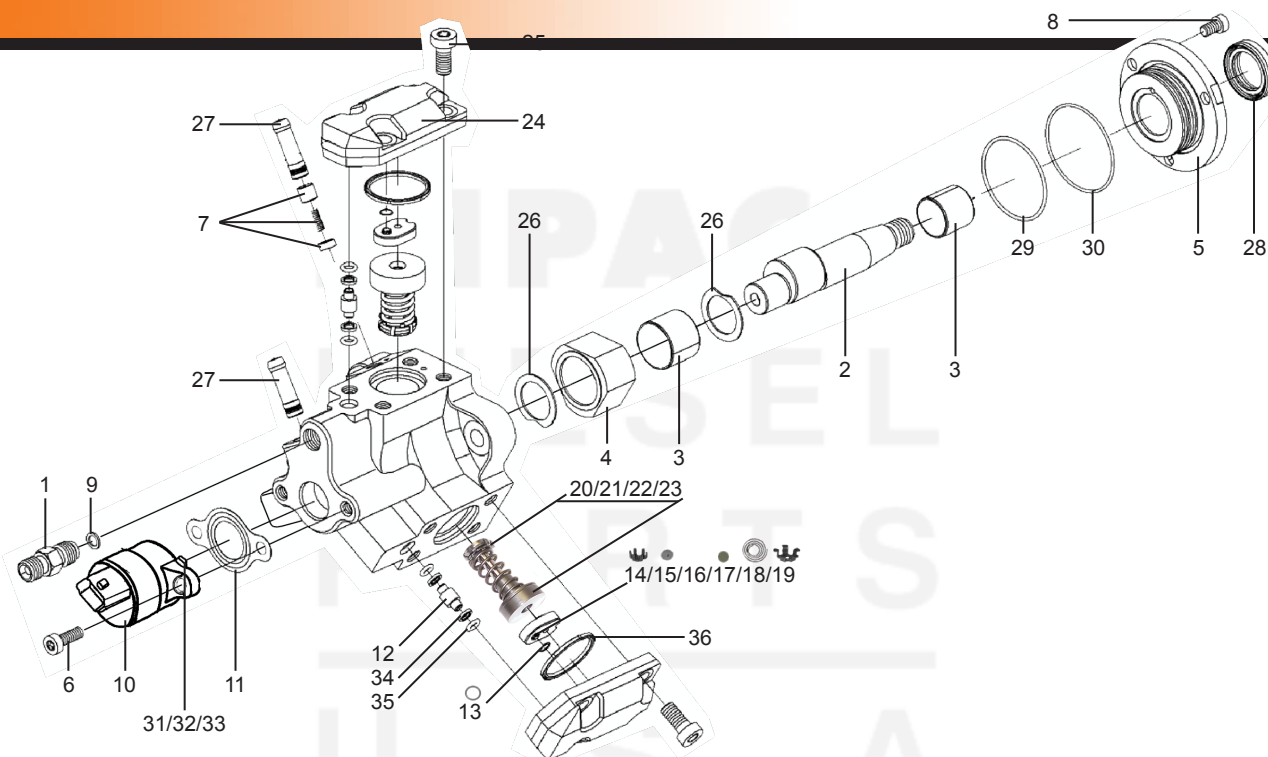
When used with an appropriate test stand and accessories, can perform a full range of diagnostic tests on CP-1 Type Common Rail fuel systems. When joined with the RTF25052 (CP-3, Delphi, Siemens) or RTF25065 (CP-2) add-on simulator the system will be able to perform a full range of tests on CP-2, CP-3, Delphi, and Siemens Common Rail fuel systems. The RTF25005 unit comes with the cables, connectors, sensors, and other equipment needed to test many popular CP-1 systems. Additional connector kits for Mercedes CP-1 systems are available. An additional advantage is the system works with most any test bench available.



# COMMON RAIL FUEL SYSTEMS

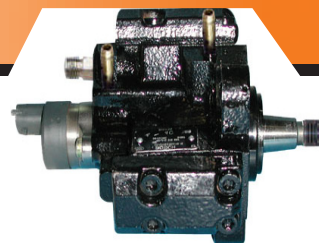
## Bosch CP-1 Fuel Pump

# DIPACO



REF	PART	DESCRIPTION	QTY
1	-	HIGH PRESSURE OUTLET	1
2	RTF25016	CAMSHAFT-SINGLE OIL SEAL	1
2	RTF25017	CAMSHAFT-DUAL OIL SEAL	1
2	RTF25037	CAMSHAFT (MERCEDES)	1
3	RTF25036	CAMSHAFT BUSHING KIT	1
4	RTF25018	CAM LOBE	1
5	-	COVER	1
6	RTF25019	PRESSURE REGULATOR SCREW	2
7	RTF25021	SAFETY VALVE ASSY	1
7	RTF25038	SAFETY VALVE ASSY (MERC)	1
8	RTF25020	COVER SCREW	3
9	RTF25022	WASHER	1
10	-	PRESSURE REGULATOR	1
11	RTF25054	PRESSURE REGULATOR GSKT	1
12	RTF25025	ELEMENT COVER ALIGN PIN	3
13	RTF25023	075/080 WASHER	3
13	RTF25024	065/075 WASHER	3
14	RTF25047	RETAINER DISCHARGE BALL	3
15	RTF25026	DISCHARGE BALL	3
16	-	VALVE BLOCK	3
17	RTF25121	SUCTION VALVE	3
18	RTF25027	SUCTION VALVE SPRING	3
19	RTF25048	RETAINER SUCTION VALVE	3
20	RTF25122	ELEMENT SPIDER	3
21	RTF25080	CLIP	3
22	RTF25015	ELEMENT SPRING	3
23	RTF25029	PUMP ELEMENT 6.5	3
23	RTF25028	PUMP ELEMENT 7.0	3
23	RTF25123	PUMP ELEMENT 7.5	3

REF	PART	DESCRIPTION	QTY
24	-	ELEMENT COVER	3
25	RTF25046	ELEMENT COVER SCREW	12
26	RTF25030	WASHER	2
27	RTF25031	INLET/OUTLET TUBE	2
-	RTF25032	PUMP O-RING/SEAL KIT (EARLY)	1
-	RTF25092	PUMP O-RING/SEAL KIT (LATE)	1
28	-	FRONT SEAL	1
29	-	FRONT COVER O-RING	1
30	-	FRONT COVER O-RING	1
31	-	PRESSURE REG O-RING	1
32	-	PRESSURE REG SEAL RING	1
33	-	PRESSURE REG O-RING	1
34	-	COVER ALIGN PIN O-RING	6
35	-	COVER ALIGN PIN SEAL RING	6
36	-	COVER SEAL RING (EARLY)	3
36	-	COVER SEAL RING (LATE)	3
-	-	COVER SEAL RING (LATE)	3
-	RTF25053	PRESSURE REG SEAL KIT	1
31	-	PRESSURE REG O-RING	1
32	-	PRESSURE REG SEAL RING	1
33	-	PRESSURE REG O-RING	1
-	RTF25034	CONE WASHER KIT	1
13	RTF25023	075/080 WASHER	12
13	RTF25024	065/075 WASHER	12
-	RTF25033	FRONT SEAL KIT (MERCEDES)	1
28	-	FRONT SEAL	1
-	-	MOUNTING O-RING	1
-	RTF25101	ELMNT SHUTOFF VALVE O-RING	1



#### RTF25111

##### CP-1 Screw Kit

Zinc plated screws for element covers, front cover, and pressure regulator. Screws should be replaced every time pump is repaired. Includes 12-RTF25046, 3-RTF25020, and 2-RTF25019.



#### RTF25000

##### Mercedes CP-1 Test Kit Metric Spline

##### RTF25000-A

##### Mercedes CP-1 Test Kit Imperial Spline

For use with Mercedes CP-1 common rail fuel systems.



#### RTF25001

##### Camshaft Bushing Tool Kit

Tools for removing and installing camshaft bushings. Kit also includes 5 RTF25036 bushing kits.



#### RTF25002

##### Swivel Vise Mounting Kit

Includes bracket and rotating plate for mounting non-Mercedes fuel pumps.



#### RTF25003

##### Swivel Vise



#### RTF25050

##### Swivel Vise Adapter Mercedes

Rotating plate for mounting Mercedes fuel pumps in RTF25002 Swivel Vise. Included in RTF25000 and RTF25000-A.

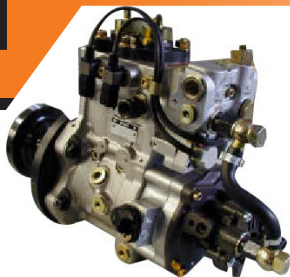




## COMMON RAIL FUEL SYSTEMS

### Bosch CP-2 Fuel Pump

# DIPACO



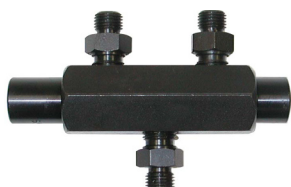
Applications:  
Renault  
Mitsubishi



RTF25065  
Electronic Simulator  
Add-on Module



RTF25066  
Amperage Meter Kit



RTF25067  
Rail Element



RTF25068  
Element Selector

### Applications:

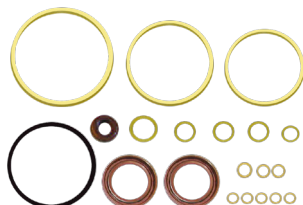
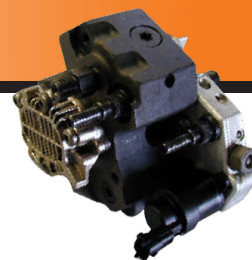
CP3-70

CP3-80

CP3-110

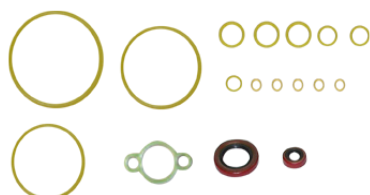
Duramax 6600

Cummins ISB<sup>e</sup>



### RTF25088 Internal O-Ring and Seal Kit

CP3-110  
Duramax 6600  
Cummins ISB<sup>e</sup>



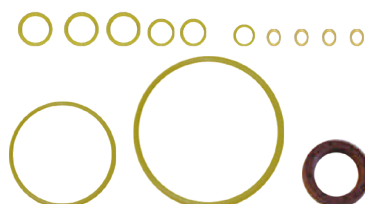
### RTF25089 Internal O-Ring and Seal Kit

CP3-70



### RTF25090 Internal O-Ring and Seal Kit

CP3-80



### RTF25091 Internal O-Ring and Seal Kit

CP3-70  
*No Supply Pump*



### RTF25102 CP3-70 Screw Kit

### RTF25103 CP3-80/110 Screw Kit

Zinc plated screws for  
element covers, front  
cover, and pressure  
regulator. Screws should  
be replaced every time  
pump is repaired.



### RTF25124 Front Seal Kit CP3-70



### COMING Element Valve CP3-70



### COMING Element Plug CP3-70



### COMING Element Plug CP3-80 and CP3-110 See diagram #1 page 2-8

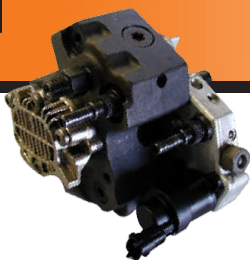


### COMING Element Valve CP3-80 and CP3-110 See diagram #2 page 2-8

# COMMON RAIL FUEL SYSTEMS

## Bosch CP-3 Fuel Pump

# DIPACO



**RTF25052**  
Electronic Simulator  
Add-on Module



**RTF25058**  
Swivel Vise Adapter



**RTF25059**  
CP3 Tappet Lifter  
Tool Kit  
For all CP3 pumps  
except Duramax 6600



**RTF25060**  
Transfer Pressure  
Connector



**RTF25066**  
Amperage Meter Kit



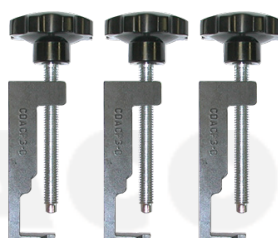
**RTF25071**  
Element Plug Torx Bit



**RTF25072**  
Camshaft Bushing  
Tool Kit  
Tools for removing and  
installing camshaft  
bushings.



**RTF25073**  
Inlet and Return Fitting  
Socket



**RTF25114**  
CP3 Tappet Lifter  
Tool Kit  
Duramax 6600 only



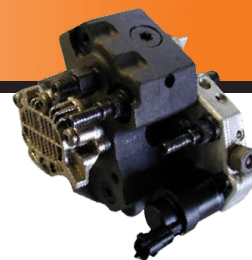
**RTF25118**  
CP3 Inlet Metering Valve  
Disassembly Tool



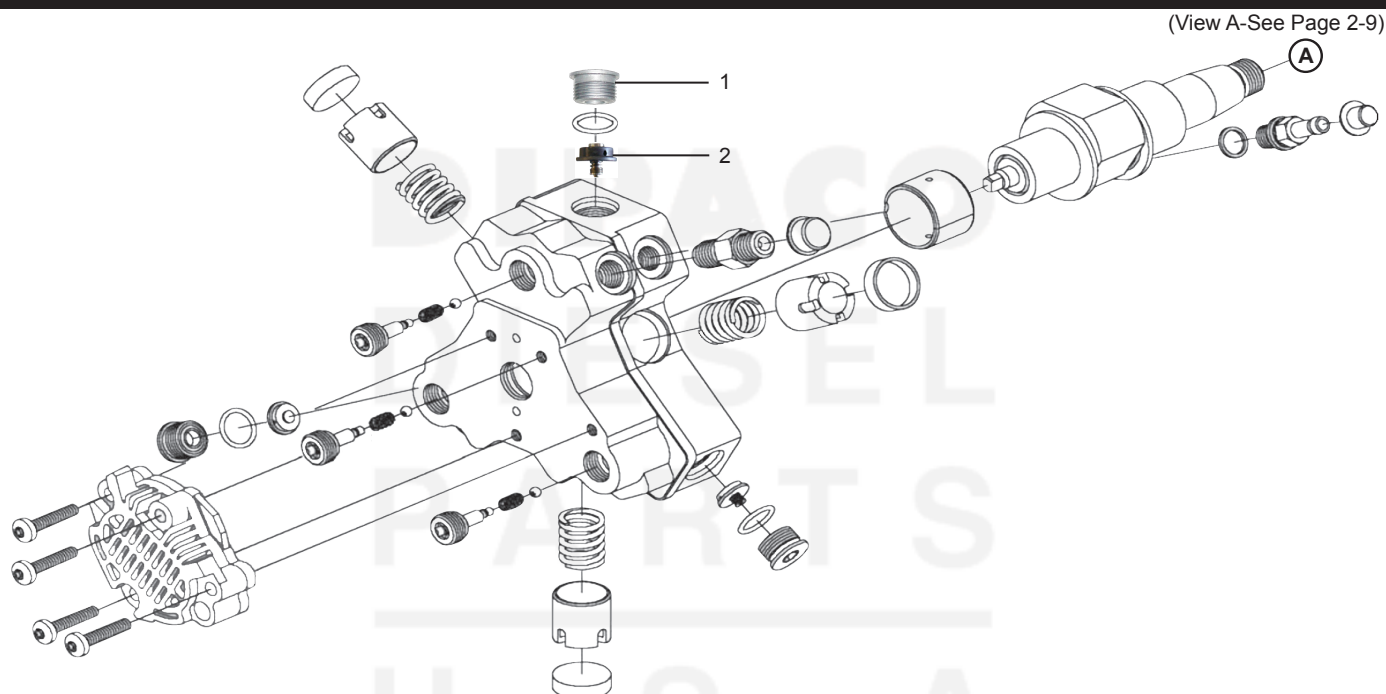
**0281002488**  
Pressure-Control Valve



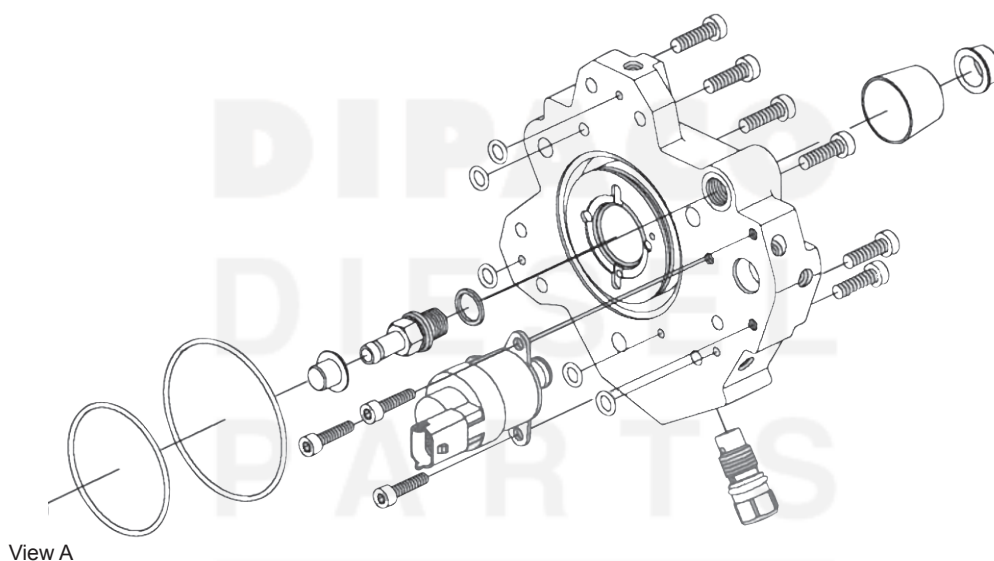
**RTF25126**  
Camshaft Bushing Tool  
Duramax 6600 only



DIPACO  
DIESEL  
PARTS  
U S A  
DIPACO  
DIESEL  
PARTS  
U S A



REF	PART	DESCRIPTION	QTY
1	-	ELEMENT PLUG CP3-80/CP3-110	1
2	-	ELEMENT VALVE CP3-80/CP3-110	1



REF	PART	DESCRIPTION	QTY

REF	PART	DESCRIPTION	QTY

## COMMON RAIL FUEL SYSTEMS

## Delphi Fuel Pump

DIPACO

## Applications:

Ford: Focus, Mondeo &amp; Transit Van

Hyundai

Jaguar X-Type

Nissan

Peugeot

Renault: Clio &amp; Kangoo



**RTF25052**  
Electronic Simulator  
Add-on Module



**CDFDPF**  
RTF  
Flange  
Ford Focus



**RTF25061**  
Transfer Pressure  
Connector



**RTF25066**  
Amperage Meter Kit



**RTF25079**  
Pressure Connector  
Cable



**RTF25127**  
Test Bench Mounting  
Flange  
Renault Clio



**CDF2**  
Flange  
Ford Focus



Applications:

Ford Transit Van

Mazda

Nissan

Toyota



**ACME11**  
RTF  
Electronic Simulator  
Add-on Module  
HP2



**RTF25066**  
Amperage Meter Kit



**RTF25128**  
Swivel Vise Adapter  
HP2 & HP3 High  
Pressure Pumps



**RTF25129**  
Test Bench Mounting  
Flange  
HP2 & HP3 High  
Pressure Pumps



**555-HP2**  
RTF  
HP2



**CD1700-2**  
RTF



**CDRHP2**  
RTF



## COMMON RAIL FUEL SYSTEMS

## Denso Fuel Pump-HP3

**DIPACO**

Applications:  
John Deere 4045H  
John Deere 6068H



**ACME12**  
**RTF**  
**Electronic Simulator**  
**Add-on Module**  
**HP3**



**RTF25128**  
**Swivel Vise Adapter**  
**HP2 & HP3**  
**High Pressure Pumps**



**RTF25129**  
**Test Bench Mounting**  
**Flange**  
**HP2 & HP3**  
**High Pressure Pumps**

Applications:  
Peugeot



**RTF25052**  
Electronic Simulator  
Add-on Module



**RTF25066**  
Amperage Meter Kit



**CD1700-A**  
RTF



**555-6A**  
RTF

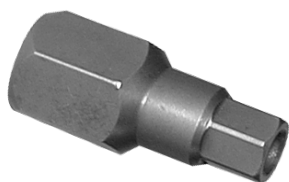


**555-6B**  
RTF

# COMMON RAIL FUEL SYSTEMS

## Bosch Common Rail Injector

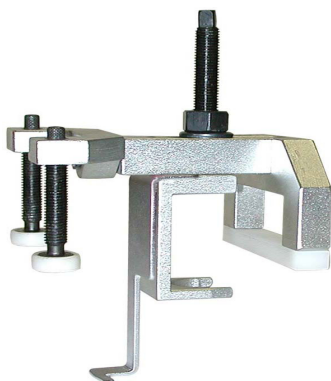
# DIPACO



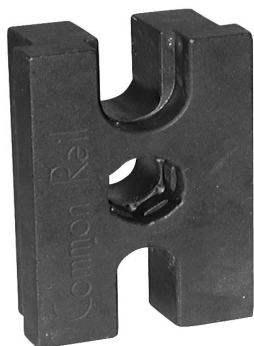
**RTF25051**  
Armature Retainer Tool



**RTF25132**  
Injector Seat Cleaning  
Tool



**RTF25063**  
19mm Injector  
Extraction Tool



**RTF25064**  
19mm Injector Holding  
Assembly/Disassembly  
Block

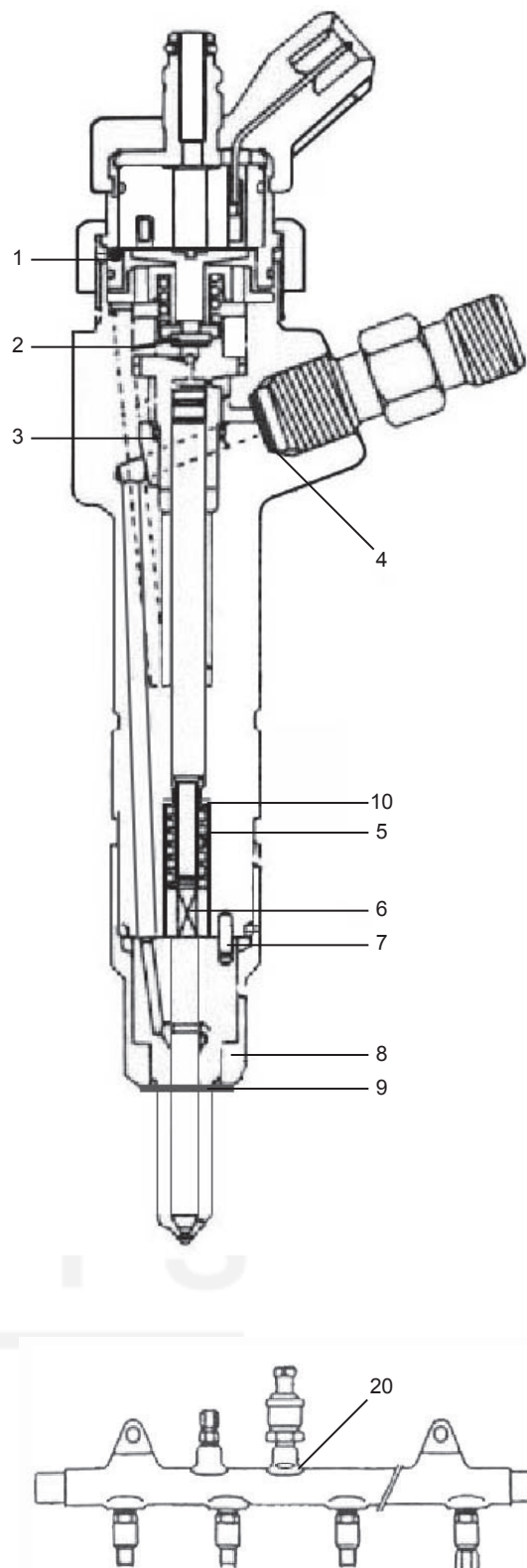


**RTF25130**  
Installation Tool for  
RTF25082 Seal Ring



**RTF25131**  
Injector Removal  
Adapter Tool  
*To be used with a slide  
hammer.*

REF	PART	DESCRIPTION	QTY
1	RTF25013	SOLENOID O-RING	1
2	RTF25083	SPHERICAL VALVE	1
3	RTF25082	WASHER	1
4	RTF25049	WASHER	1
5	-	SPRING	1
6	-	SPRING SEAT	1
7	RTF25055	ALIGNMENT PIN	2
8	RTF25014	NOZZLE NUT (19MM)	1
8	RTF25116	NOZZLE NUT (17MM)	1
9	RTF25087	NOZZLE WASHER (MERCEDES)	1
9	RTF25104	NOZZLE WASHER (FIAT & BMW)	1
9	RTF25133	NOZZLE WASHER (PEUGEOT)	1
10	RTF25134	NOZZLE SHIM 1.2mm	A/R
10	RTF25135	NOZZLE SHIM 1.3mm	A/R
10	RTF25136	NOZZLE SHIM 1.4mm	A/R
10	RTF25137	NOZZLE SHIM 1.5mm	A/R
10	RTF25138	NOZZLE SHIM 1.6mm	A/R
10	RTF25139	NOZZLE SHIM 1.7mm	A/R
20	RTF25049	WASHER	1

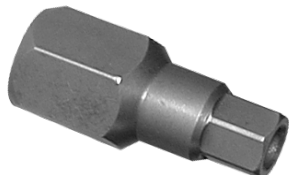


## COMMON RAIL FUEL SYSTEMS

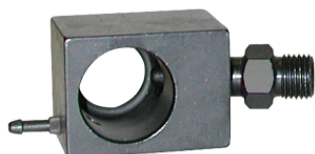
Cummins ISB<sup>e</sup> Common Rail Injector**DIPACO**

Applications:  
Cummins ISB<sup>e</sup>  
Iveco

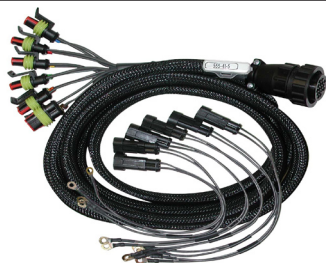
Renault  
MAN  
Autocar



**RTF25051**  
Armature Retainer Tool



**RTF25070**  
Injector Adapter Block



**RTF25069**  
Wiring Harness



**RTF25081**  
**Quick Connector 21.5mm**  
Use with Rilsan tubes  
supplied in RTF25041.  
Order in multiples of  
injectors that can be tested.



8mm x 2mm x150mm  
14 x 14 line nuts

**RTF25094**  
**Test Fuel Line**  
Injectors

REF	PART	DESCRIPTION	QTY
1	RTF25106	SOLENOID O-RING	2
2	-	NOZZLE NUT	1
3	RTF25105	INLET TUBE O-RING	1
4	RTF25055	ALIGNMENT PIN	2
5	-	SPRING SEAT	1
6	-	SHIM KIT	A/R
7	-	INLET TUBE	1
8	-	ADAPTER	1
9	RTF25082	WASHER	1
9	RTF25140	WASHER-ALUMINUM	1
10	-	O-RING	1
11	-	WASHER	1
12	RTF25083	SPHERICAL VALVE	1
13	RTF25107	NOZZLE WASHER	1

## COMMON RAIL FUEL SYSTEMS

### Delphi Common Rail Injector

# DIPACO



RTF25074  
Wiring Harness



REF	PART	DESCRIPTION	QTY

## COMMON RAIL FUEL SYSTEMS

## Duramax/Isuzu Common Rail Injector

**DIPACO**

Applications:  
GM Duramax 6600



**RTF25069**  
**Wiring Harness**



**RTF25086**  
**Quick Connector 21.5mm**  
**Duramax 6600**  
Use with Rilsan tubes  
supplied in RTF25041.  
Order in multiples of



**8mm x 2mm x150mm**  
**14 x 14 line nuts**

**RTF25094**  
**Test Fuel Line**  
Injectors



**Injector Testing Leak-off**  
**Hardware**

**D42014 (2) Leak-off Hose**  
**D42411 (4) Banjo**  
**D2911235700 (4) Bolt**

Using the above hardware  
will allow for injector  
leak-off when testing four  
Duramax 6600 injectors.

REF	PART	DESCRIPTION	QTY

A detailed technical line drawing of a Diesel Injector Assembly. The drawing shows a cross-section of the assembly, revealing internal components such as the nozzle, spring, and electrical connector. The assembly is shown in a vertical orientation, with the nozzle at the bottom and the electrical connector at the top. The drawing is a black and white line drawing, typical of technical specifications.

## COMMON RAIL FUEL SYSTEMS

## Denso ECD-U2 Injector

DIPACO

Applications:  
Komatsu SAA 6D125  
Isuzu Duramax 7800



**RTF25069**  
**Wiring Harness**



**RTF26064**  
**Adapter**  
Order in multiples of  
injectors that can be  
tested. (Komatsu Only)



**RTF26065**  
**Quick Connector**



**RTF25081**  
**Quick Connector 21.5mm**  
Use with Rilsan tubes  
supplied in RTF25041.  
Order in multiples of  
injectors that can be tested.

All fuel line kits are constructed using special fuel line material able to handle 2,000 bar (28,000 PSI) pressure. Kits include the line from pump to rail and lines for each injector.

**RTF25109**  
Mercedes Vito  
Fuel Line Kit  
200/220

**RTF25110**  
Mercedes Sprinter  
Fuel Line Kit  
270

## COMMON RAIL FUEL SYSTEMS

### Diagnostic Tools

# DIPACO



**RTF25004**  
**Manometer**  
0-1500 Bar



**RTF25062**  
**On-Engine Diagnostic Kit**  
Test the efficiency of the fuel pump. Includes manometer, manual pressure control, and a rail pressure sensor controller.



**RTF26042**  
**Electronic Simulator**  
**For Pop Testing**  
**Common Rail Injectors**  
**Bosch**



**RTF26043**  
**Electronic Simulator**  
**For Pop Testing**  
**Common Rail Injectors**  
**Delphi**



**RTF26050**  
**Test and Assembly**  
**Fixture**

Includes injector holding  
fixtures and nozzle  
measurement tool.



**DIPACO**  
**DIESEL**  
**PARTS**  


---

**U S A**

**DIPACO**  
**DIESEL**  
**PARTS**  


---

**U S A**

DIPACO  
DIESEL  
PARTS  
U S A

DIPACO  
DIESEL  
PARTS  
U S A

**DIPACO**  
**DIESEL**  
**PARTS**  

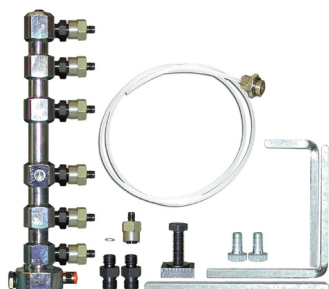
---

**U S A**

**DIPACO**  
**DIESEL**  
**PARTS**  

---

**U S A**



**RTF25007**  
**Test Bench Rail Kit**



**RTF25041**  
**Injector Connector Kit**  
Six quick connectors for use with 17mm and 19mm injectors on test stand.



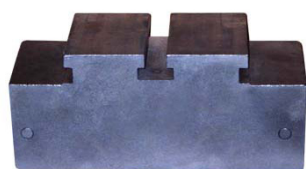
**RTF25075**  
**Fuel Measurement Accumulator Adapter**  
Hartridge 1100/2500



**RTF25076**  
**Fuel Measurement Accumulator Adapter**  
Hartridge AVM



**RTF25077**  
**Fuel Measurement Accumulator Adapter**  
Bosch 815/KMA



**RTF25078**  
**Test Bench Base Adapter (Set of 2)**  
Hartridge



**RTF25081**  
**Quick Connector 21.5mm**  
Use with Rilsan tubes supplied in RTF25041. Order in multiples of injectors that can be tested.



**RTF25086**  
**Quick Connector 21.5mm Duramax 6600**  
Use with Rilsan tubes supplied in RTF25041.



**8mm x 2mm x 150mm**  
**12 x 14 line nuts**

**RTF25093**  
**Test Fuel Line**  
Injectors



**8mm x 2mm x 150mm**  
**14 x 14 line nuts**

**RTF25094**  
**Test Fuel Line**  
Injectors



**8mm x 2mm x 200mm**  
**14 x 14 line nuts**

**RTF25095**  
**Test Fuel Line**  
Pump/sensor/rail  
CP2 & ECD-U2



**8mm x 2mm x 94mm**  
**12 x 14 line nuts**

**RTF25096**  
**Test Fuel Line**  
Pump/sensor/rail



**8mm x 2mm x 94mm**  
**12 x 12 line nuts**

**RTF25097**  
**Test Fuel Line**  
Pump/sensor/rail



**8mm x 2mm x 94mm**  
**14 x 14 line nuts**

**RTF25098**  
**Test Fuel Line**  
Pump/sensor/rail



**8mm x 2mm x 200mm**  
**12 x 14 line nuts**

**RTF25099**  
**Test Fuel Line**  
Pump/sensor/rail

**DIPACO**  
**DIESEL**  
**PARTS**  
—  
**U S A**

**DIPACO**  
**DIESEL**  
**PARTS**  
—  
**U S A**



**RTF25120**  
**Common Rail**  
**Injector Test Cabinet**



**RTF25141**  
**Extention Cable**



**RTF25142**  
**Extention Cable**

**DIPACO**  
**DIESEL**  
**PARTS**  

---

**U S A**

**DIPACO**  
**DIESEL**  
**PARTS**  

---

**U S A**