

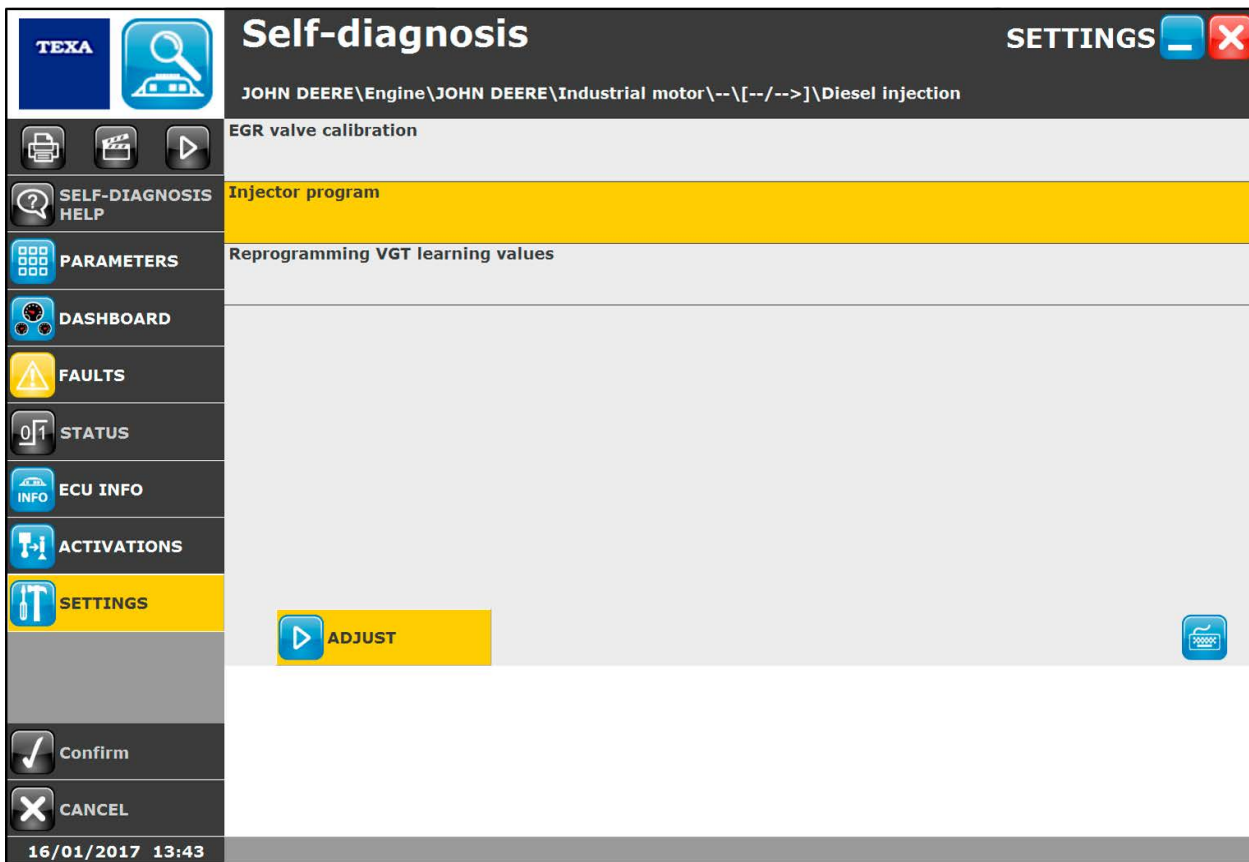
APTB 04/17

SUBJECT: TEXA Off-Highway Diagnostic Tool

June 19, 2017

With the release of Alliant Power Remanufactured Common Rail Injectors for multiple John Deere® agricultural and construction applications there is now a network need to have a suitable scan tool capable of diagnosing and programming injector trim codes. As an alternative to the OEM John Deere Service Advisor Scan Tool, Alliant Power has found a quality aftermarket scan tool called TEXA that will assist in diagnosing and can program injector trim codes for many John Deere common rail engine applications.

The image below shows a screen shot of the TEXA Off-Highway Scan Tool connected to a John Deere application. Notice that EGR Valve Calibration, Injector Program, and Reprogramming VGT Learning Values are some of the capabilities this tool can perform to certain John Deere agricultural and construction applications.



Visit www.texausa.com/distributors to find an authorized dealer near you for up-to-date information and pricing.



Technical Bulletin